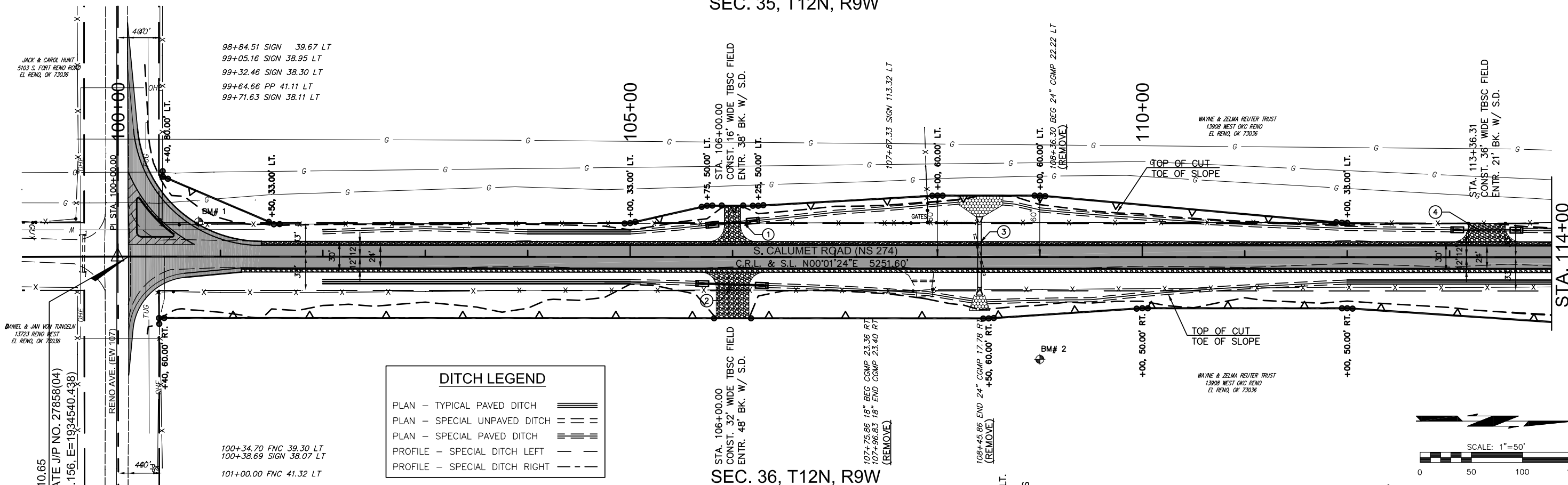


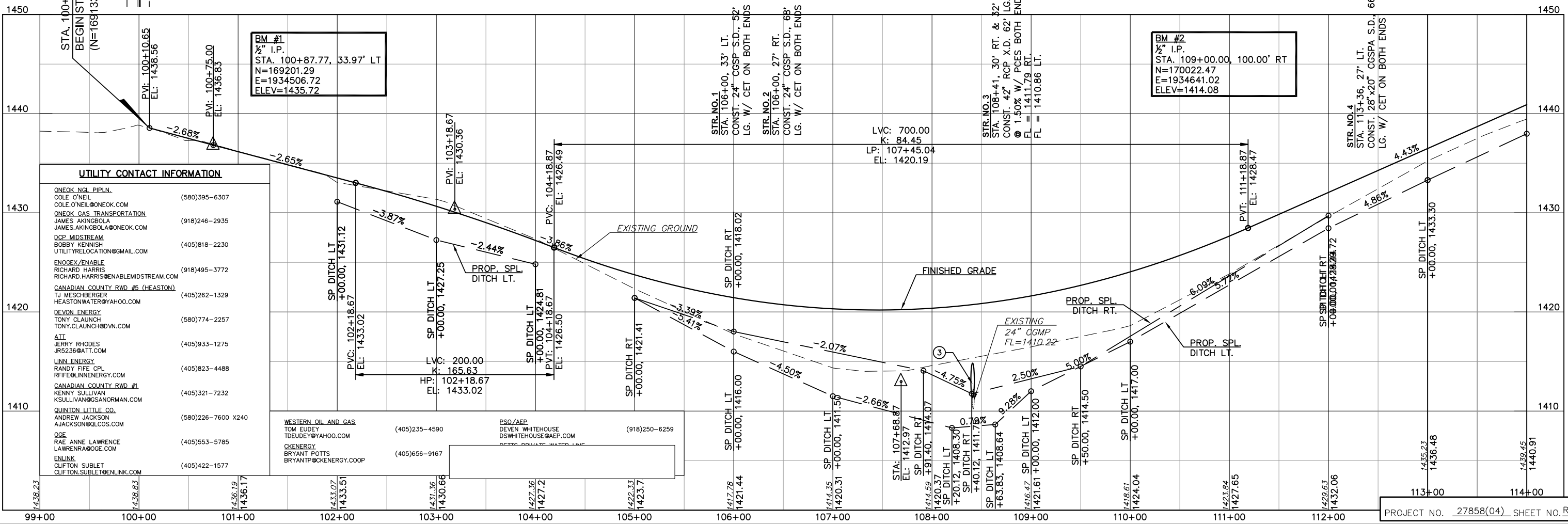
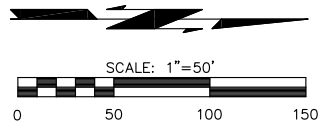
SEC. 35, T12N, R9W

SEC. 36, T12N, R9W



DITCH LEGEND

PLAN - TYPICAL PAVED DITCH	=====
PLAN - SPECIAL UNPAVED DITCH	-----
PLAN - SPECIAL PAVED DITCH	===== -----
PROFILE - SPECIAL DITCH LEFT	-----
PROFILE - SPECIAL DITCH RIGHT	-----



UTILITY CONTACT INFORMATION

ONEOK NGL PIPELN. COLE O'NEIL COLE.O'NEIL@ONEOK.COM ONEOK GAS TRANSPORTATION JAMES AKINGBOLA JAMES.AKINGBOLA@ONEOK.COM DCP MIDSTREAM BOBBY KENNISH UTILITYRELOCATION@GMAIL.COM ENOGEX/ENABLE RICHARD HARRIS RICHARD.HARRIS@ENABLEMIDSTREAM.COM CANADIAN COUNTY RWD #5 (HEASTON) TJ MESCHBERGER HEASTONWAITER@YAHOO.COM DEVON ENERGY TONY CLAUNCH TONY.CLAUNCH@DEVN.COM ATI JERRY RHODES JRS236@ATT.COM LINN ENERGY RANDY FIFE CPL RFIFE@LINNENERGY.COM CANADIAN COUNTY RWD #1 KENNY SULLIVAN KSULLIVAN@GSANORMAN.COM QUINTON LITTLE CO. ANDREW JACKSON AJACKSON@QLCOS.COM OGE RAE ANNE LAWRENCE LAWRENRA@OGE.COM ENLINK CLIFTON SUBLET CLIFTON.SUBLET@ENLINK.COM	(580)395-6307 (918)246-2935 (405)818-2230 (918)495-3772 (405)262-1329 (580)774-2257 (405)933-1275 (405)823-4488 (405)321-7232 (580)226-7600 X240 (405)553-5785 (405)422-1577
WESTERN OIL AND GAS TOM EUDEY TDEUDEY@YAHOO.COM CKENERGY BRYANT POTTS BRYANTP@CKENERGY.COOP	(405)235-4590 (405)656-9167
PSO/AEP DEVEN WHITEHOUSE DSWHITEHOUSE@AEP.COM PETTE PRIVATE WATER LINE	(918)250-6259

BM #1
1/2" I.P.
STA. 100+87.77, 33.97' LT
N=169201.29
E=1934506.72
ELEV=1435.72

BM #2
1/2" I.P.
STA. 109+00.00, 100.00' RT
N=170022.47
E=1934641.02
ELEV=1414.08

PLOTED: Tuesday, September 05, 2017 @ 03:53PM N:\V454-Columet-Bd-Calendar_County\Drawings\A459P.dwg